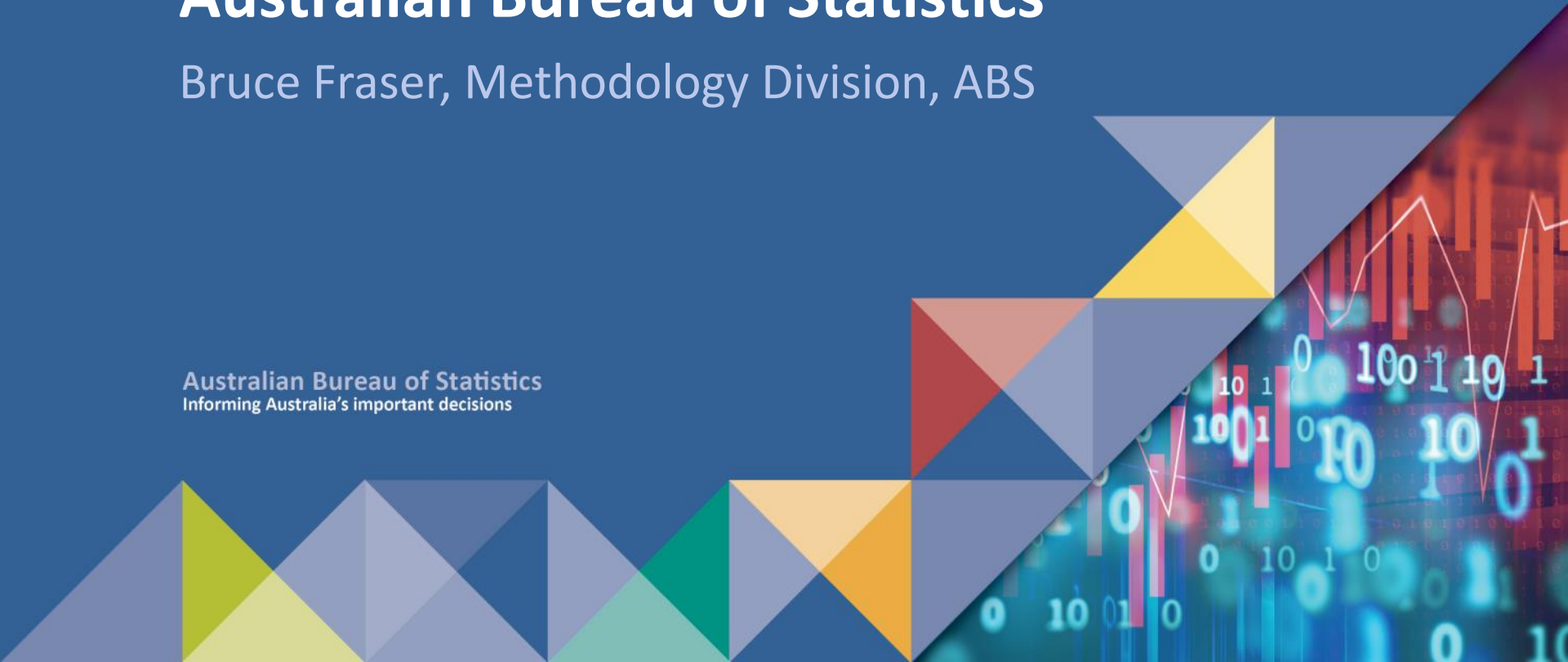


COVID-19 response from the Australian Bureau of Statistics

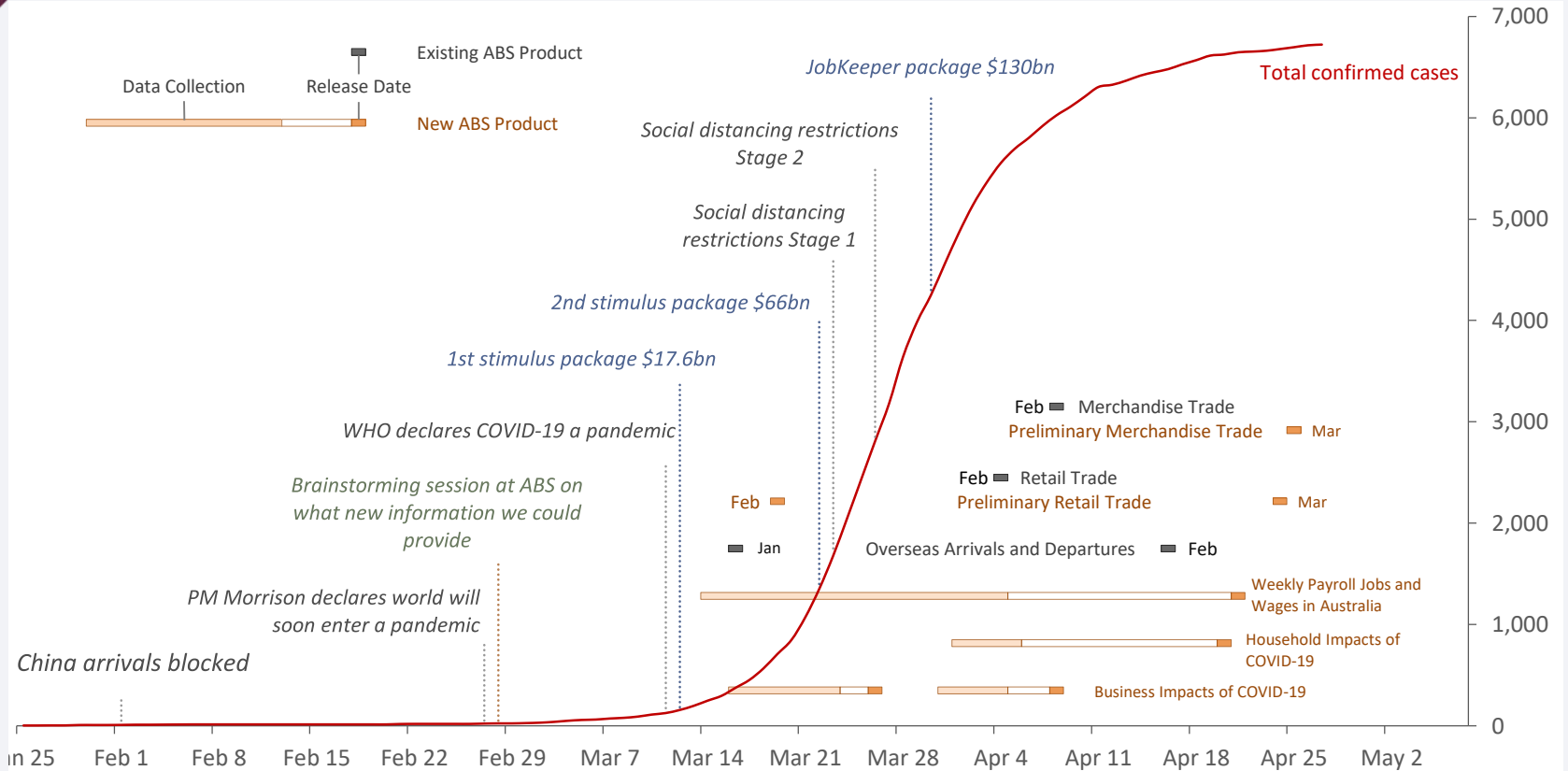
Bruce Fraser, Methodology Division, ABS



Australian Bureau of Statistics
Informing Australia's important decisions



Australian COVID-19 cases, key events and ABS data releases



[Summary](#)[Downloads](#)[Explanatory Notes](#)[Related Information](#)[Past & Future Releases](#)

Page tools:

[Print Page](#)[Print All](#)[Email Notification](#)[RSS](#)[BOOK-MARK](#)[...](#)[Search this Product](#)

Key findings

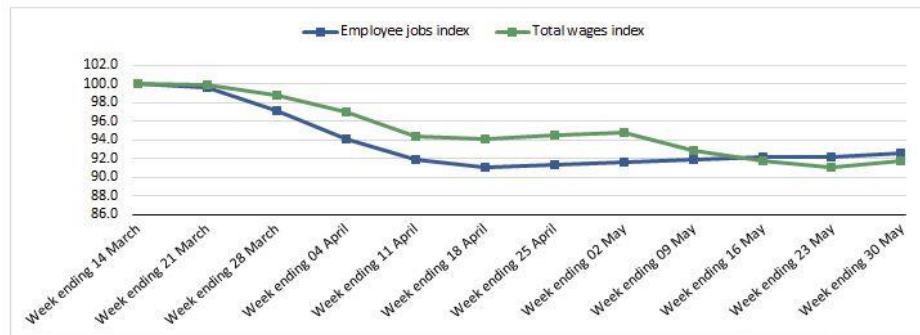
[Jobs and Wages by State and Territory](#)[Jobs and Wages by Sex](#)[Jobs and Wages by Age Group](#)[Jobs and Wages by Industry](#)[Jobs by Statistical Area 4 \(SA4\)](#)[Jobs by Industry sub-division](#)[Incorporating JobKeeper supported back payments into Weekly Payroll Jobs and Wages in Australia](#)[Secondary jobs are 29 per cent of all job losses](#)[Seasonality in payroll jobs and wages data: Unavoidable limitations](#)[Interactive Map - Jobs by SA4](#)[About this Release](#)[History of Changes](#)[Recovery in payroll jobs continued through May \(Media Release\)](#)[Interactive map shows impact of COVID-19 on local jobs \(Media Release\)](#)

KEY FINDINGS

Between the week ending 14 March 2020 (the week Australia recorded its 100th confirmed COVID-19 case) and the week ending 30 May 2020:

- Payroll jobs decreased by 7.5%
- Total wages paid decreased by 8.3%

Graph 1: Changes in payroll jobs and total wages indexed to the week ending 14 March 2020 (a)



(a) Wages data are more sensitive to period-to-period changes in reporting than jobs data and are therefore subject to greater revisions over time. They are also subject to a greater degree of seasonality. Please refer to the Explanatory Notes for further information.

Between the week ending 23 May 2020 and the week ending 30 May 2020:

- Payroll jobs increased by 0.4%, compared to no change in the previous week (0.0%)
- Total wages paid increased by 0.7%, compared to a decrease of 0.7% in the previous week

Key COVID-19 dates:

[Business Impacts of COVID-19 Survey](#)

[Operating conditions of businesses](#)

[Changes in revenue and finance arrangements](#)

[Changes in employee arrangements](#)

[Future business impacts and conditions](#)

[Business impacts visual summary](#)

[Technical note - Questionnaire](#)

[About this Release](#)

[Businesses respond to COVID-19 challenges \(Media Release\)](#)

Business Impacts of COVID-19 Survey results



May 2020

72% of businesses had less income as a result of COVID-19



73% of businesses accessed support measures

55%

Wage subsidies

19%

Renegotiated rent or lease arrangements

16%

Deferred loan repayments

1 in 10 businesses sought additional funds



57% of those borrowed from banks or financial institutions



26% sourced from a personal line of credit or savings



21% sourced funds from other businesses

74% of actively trading businesses changed how they operate

Operating as normal | Operating with modifications



Social distancing restrictions expected to impact most businesses over next 2 months



71% of businesses expect impact from social distancing restrictions



63% expect impact from trading restrictions



50% expect impact from travel restrictions

Detailed data on the impacts of COVID-19 can be found at

abs.gov.au/covid19

Key findings

Return to activities

Flu vaccination and other precautions

Time spent on activities and activities while caring for children

Job status and skill development

What's next?

Household impacts visual summary (cycle 5)

[About this Release](#)

Restaurant dining welcomed but big events are a concern (Media Release)

Household Impacts of COVID-19 Survey results



26 to 29 May 2020

4 in 5 adults had or intend to have a **flu vaccination** this year



95% **continuing to keep distance** from people outside their household



Most Australians are at least **somewhat comfortable...**

returning to their usual workplace **86%**



81% sending their children back to school or childcare



79% **avoiding social gatherings** with people who do not live with them



64% **disinfecting surfaces** before using them



3 in 4 Australians **uncomfortable** with attending **large public events**



Large public events **76%**
 Indoor gatherings 100+ people **66%**
 Resuming air travel **63%**
 Using public transport **59%**

3 in 5 Australians are looking forward to...

having larger gatherings of family and friends



dining in at restaurants and cafes



Detailed data on the impacts of COVID-19 can be found at

abs.gov.au/covid19

Challenges in new surveys

- ▶ Rapid response is not the ABS forte
- ▶ Some questions out of date by the time they are in the field
- ▶ Recruiting a household sample without field interviewers
- ▶ Payroll data is incomplete and inconsistent with published survey data
- ▶ Cannot make a new survey compulsory without tabling in Parliament
- ▶ Non-response bias

Challenges in existing surveys

- ▶ Lower response rates due to suspension of face-to-face interviewing
 - Implementing sample top-ups
 - Non-ignorable non-response
- ▶ Increased demand for timely statistics
- ▶ Concerns over covid-19 impacts for 3-yearly surveys



Thank You